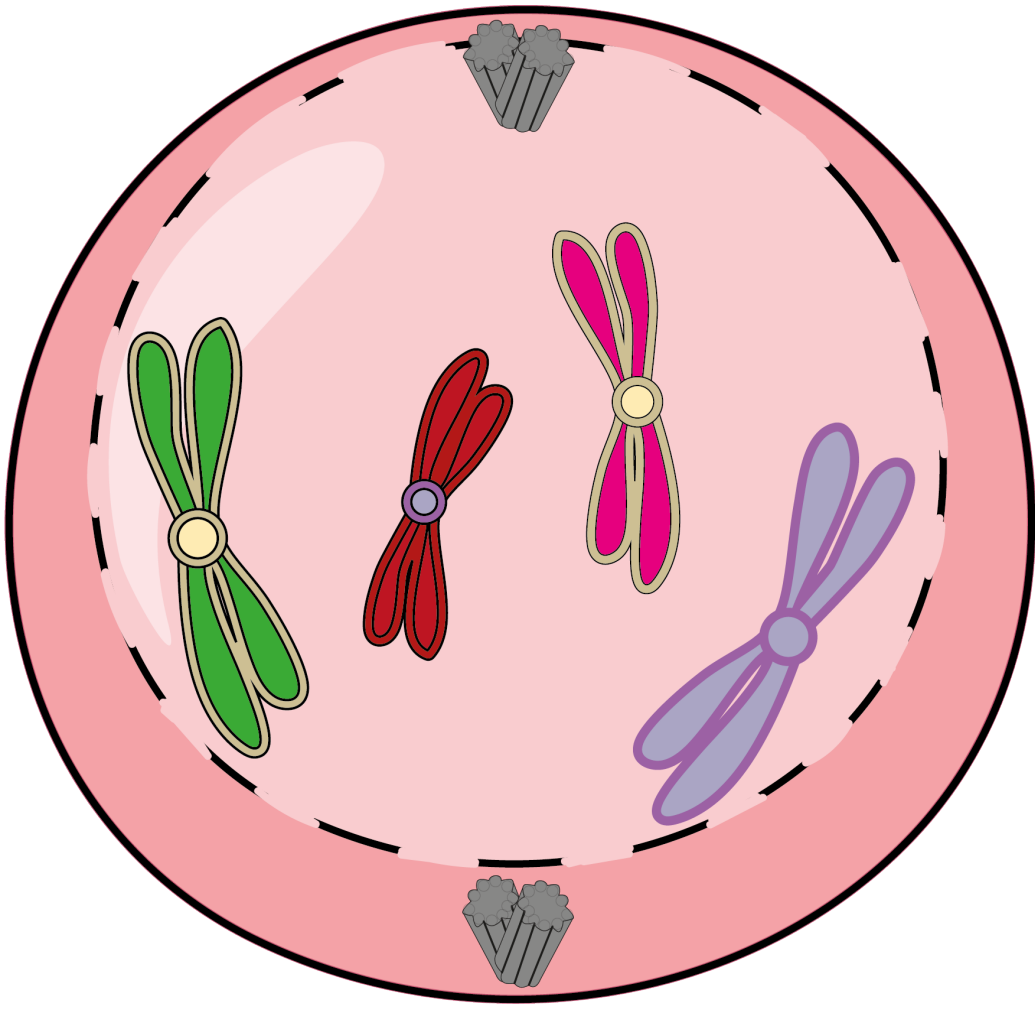
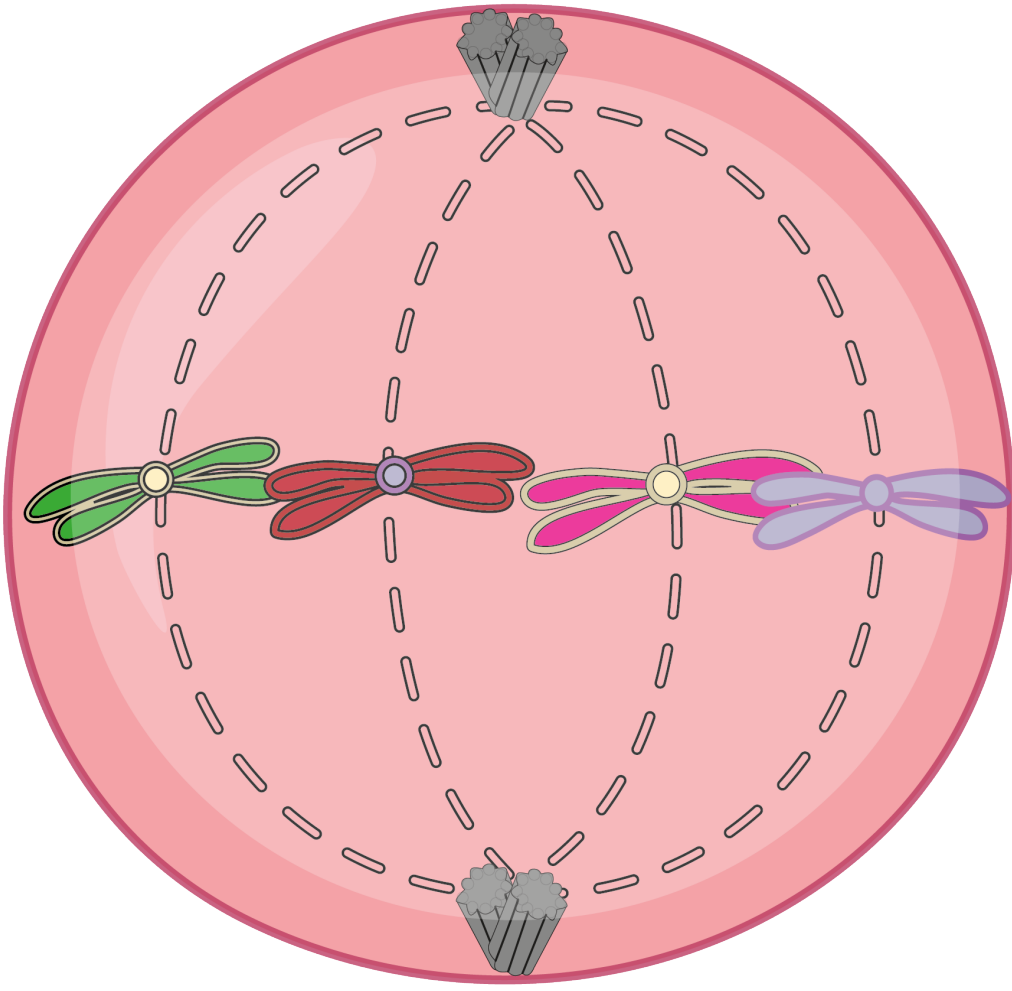


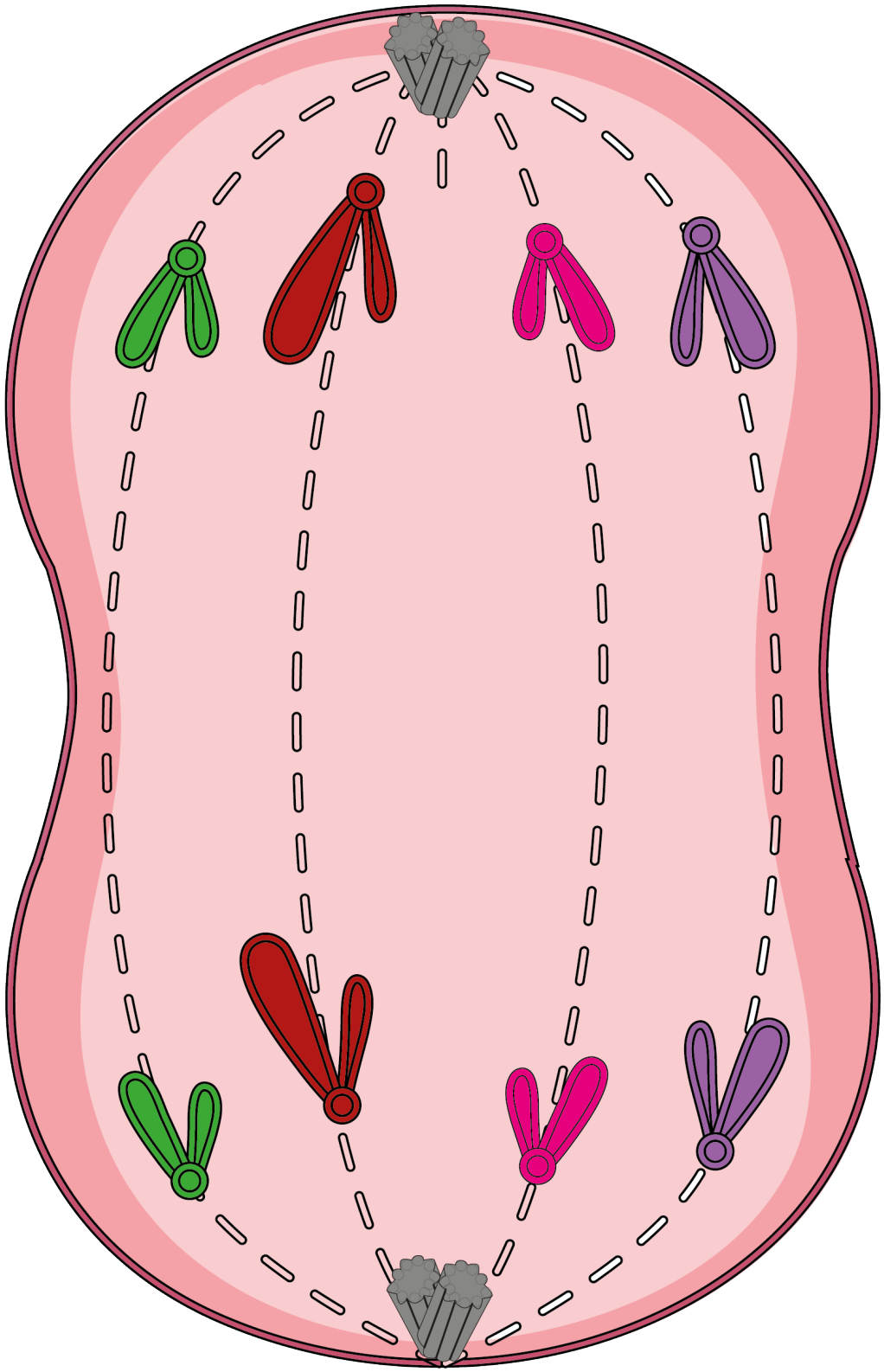
**DNA MOLEKÜLÜ KENDİNİ EŞLER VE
MİKTARINI İKİ KATINA ÇIKARTIR.**



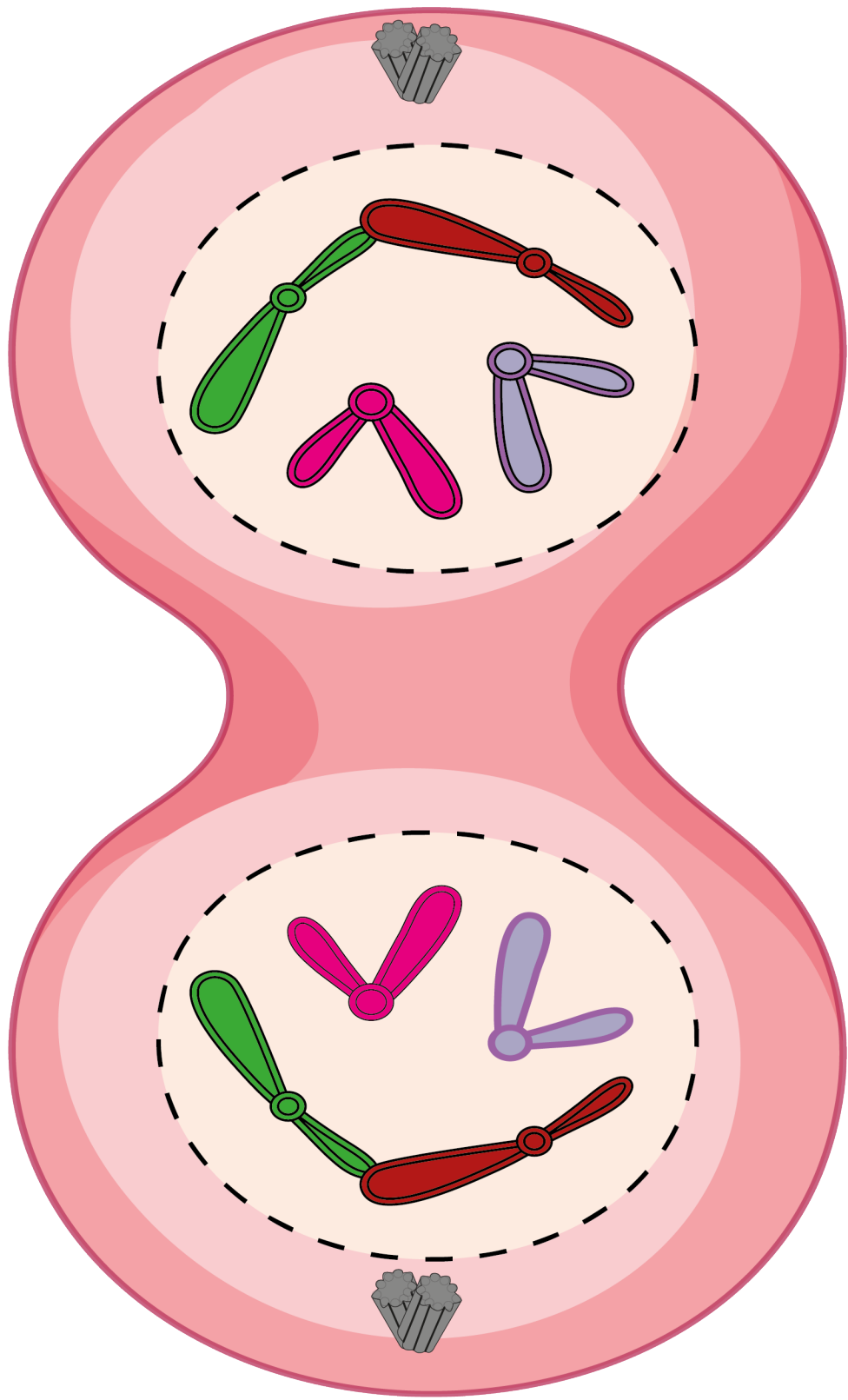
KROMATİN İPLİKLER KISALIP KALINLAŞARAK KROMOZOMLAR OLUŞUR. ÇEKİRDEK ZARI ERİR, SENTROZOMLAR ZIT KUTUPLARA GEÇER.



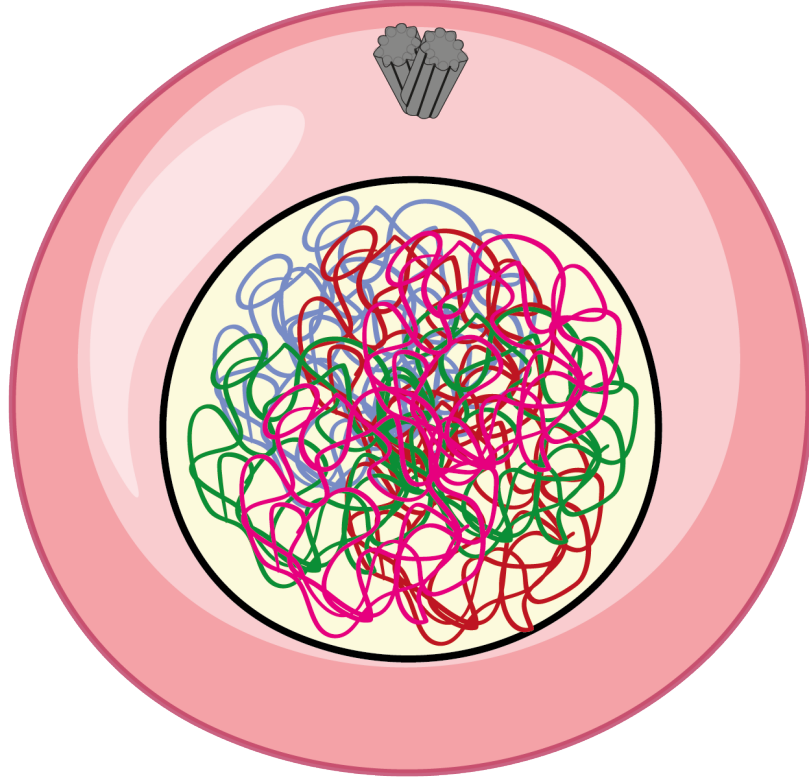
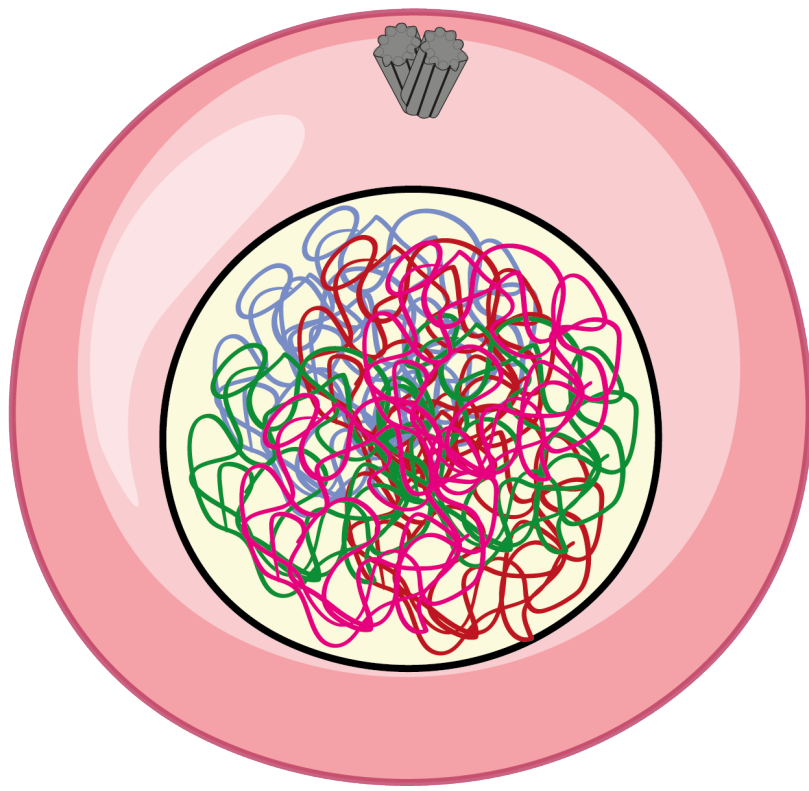
**KROMOZOMLAR İĐ İPLİKLERİNE
TUTUNARAK HÜCRENİN TAM
ORTASINA DİZİLİRLER.**



**KARDEŐ KROMATİDLER İĐ İPLİKLERİ
İLE ZİT KUTUPLARA AYRILIR.**



**YENİDEN ÇEKİRDEK ZARLARI OLUŞUR.
BOĞUNLANMA İLE SİTOPLAZMA
BÖLÜNMESİ GERÇEKLEŞİR.**



**BİRBİRİ İLE AYNI GENETİK YAPIDA
İKİ YENİ HÜCRE OLUŞUR.**